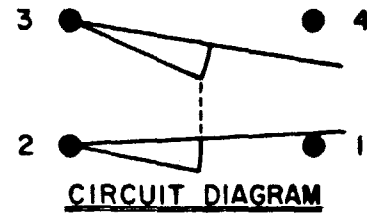


MICRO SWITCH

A DIVISION OF HONEYWELL INTERNATIONAL REGULATORY COMPANY
FED. MFR. CODE 91929

SWITCH-ENCLOSED

CATALOG LISTING
208LS3



208LS3

PAGE 1 OF 1

M

DRAWING NUMBER

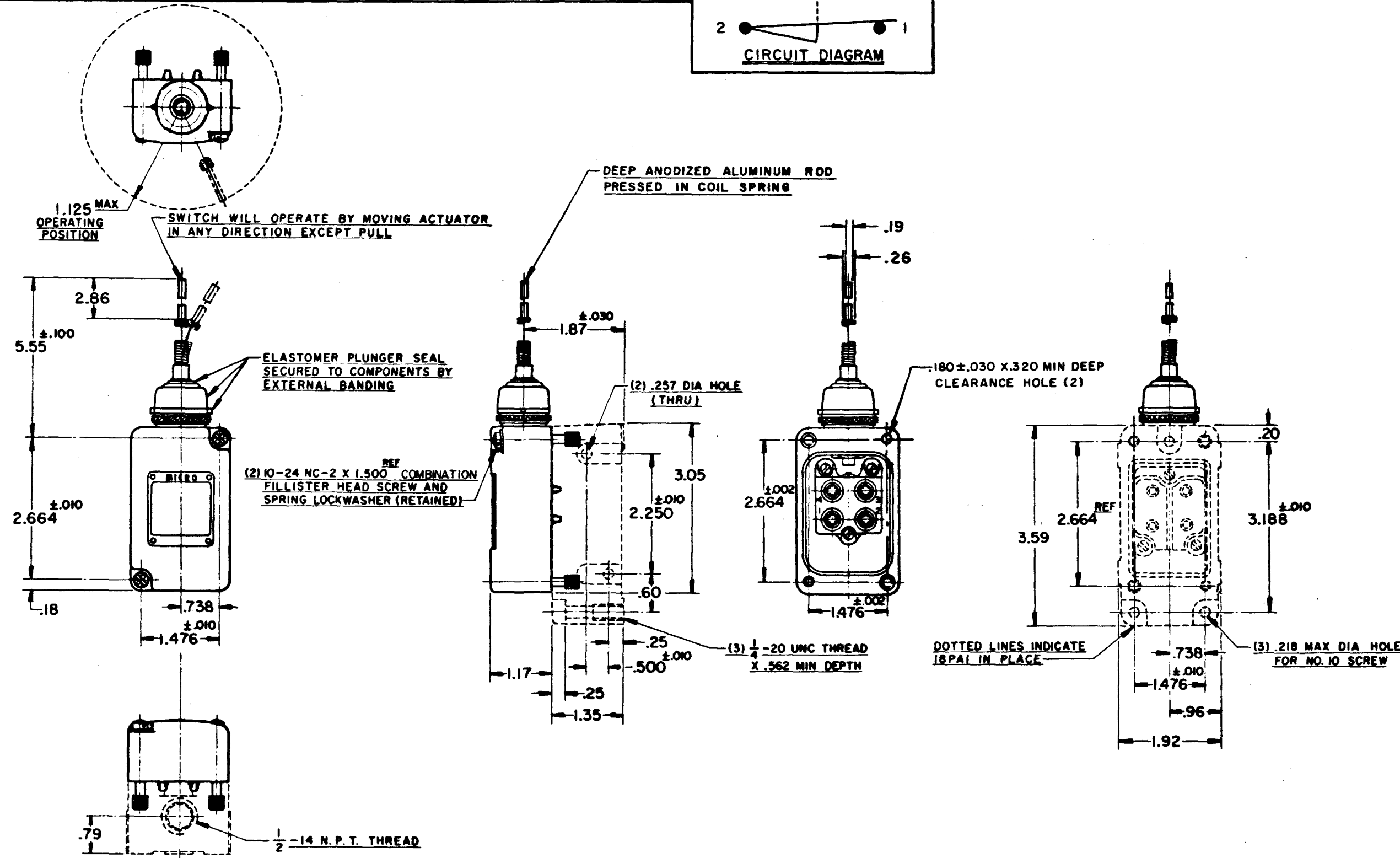
ISSUE

8

REVISIONS

A	CO15284	8 NOV 80
B	CO15437	26 DEC 80
C	CO24675	10 SEP 89
D	CO25152	19 APR 89
E	CO38805	
F	CO77031	22 DEC 93
G	CO94494	22 MAR 99

RELEASE NO. SR 8801 REPLACES



CHARACTERISTICS	ELECTRICAL DATA	SCALE 1/2 TO 1
OPERATING POSITION ----- 1.125 MAX. IN ANY DIRECTION	CONTACT ARRANGEMENT (SEE CIRCUIT DIAGRAM)	DO NOT SCALE PRINT
OPERATING FORCE ----- 5 OZ. MAX.	10A-120, 240 OR 480 VAC 1/3 HP-120 VAC; 3/4 HP-240 VAC 0.8A-115 VDC; 0.4A-230 VDC; 0.1A-550 VDC PILOT DUTY 600 VAC MAX	UNLESS OTHERWISE SPECIFIED DIMENSIONS ARE IN INCHES
FORCE AT 2" ----- 10 OZ. MAX.		TOLERANCES ARE:
SWITCH-BASIC REPLACEMENT ----- 2MN6		ONE PLACE (.0) ±.030 TWO PLACE (.00) ±.015 THREE PLACE (.000) ±.005 ANGLES ±
		WEIGHT

THIS DRAWING COVERS A PROPRIETARY ITEM AND IS THE PROPERTY OF MICRO SWITCH, A DIVISION OF HONEYWELL. THIS DRAWING IS NOT TO BE COPIED OR USED WITHOUT THE APPROVAL OF MICRO SWITCH.

FORMTEK
FO-90378.003
DRAWN

1 Y 0 26 FEB 80 CHECK DAW 26 FEB 80